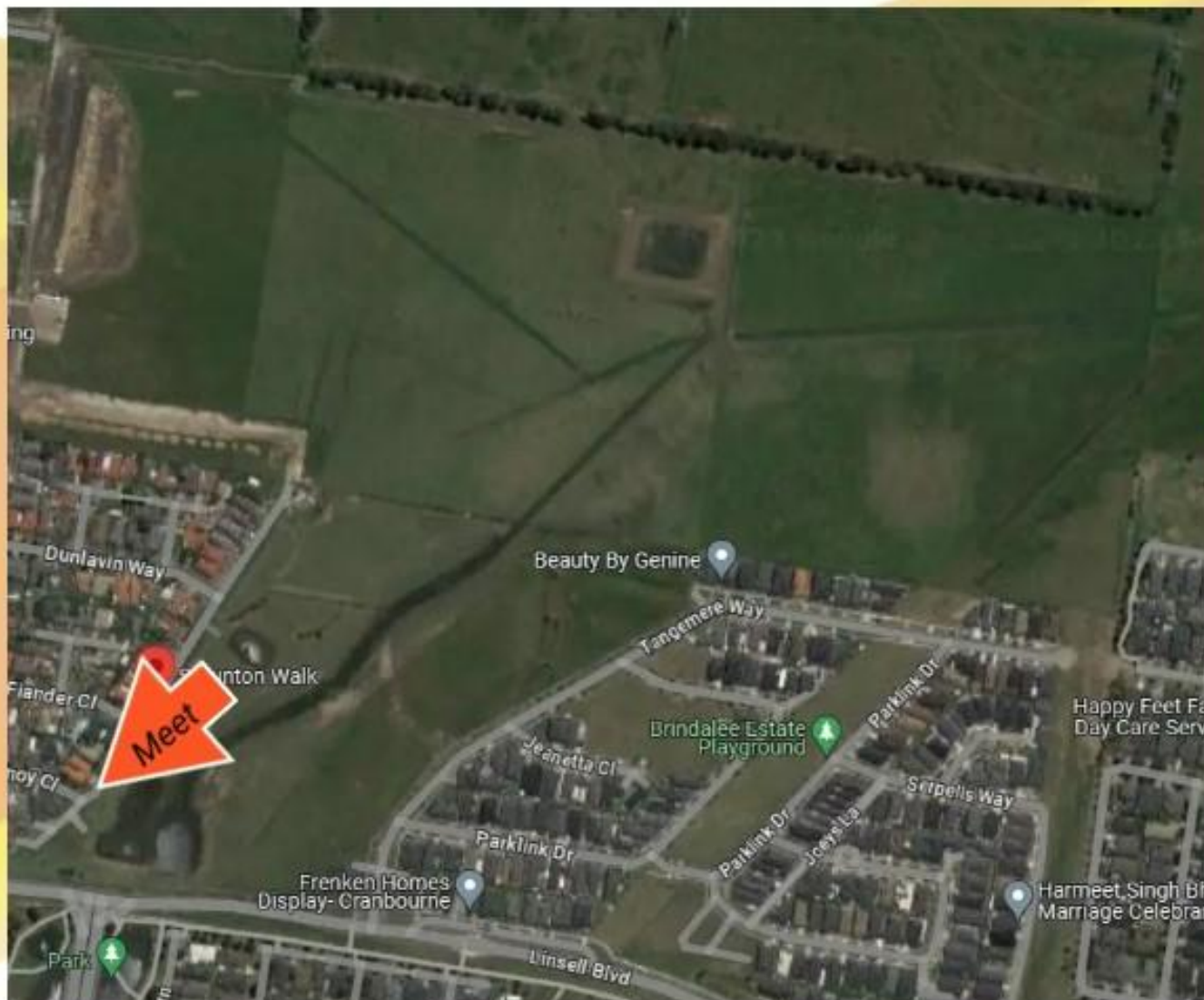


Staunton Walk Reserve

Staunton Walk, Cranbourne East



This reserve is a large open flat area. There are some accessible waterways but most is grass. No trees or shade here so wear appropriate clothing and sunscreen. This is perfect for desensitising reactive dogs as there is a lot of open space. Don't forget the aeroguard, sunscreen and water. This is a great place for your dog to explore, sniff, swim, run, and train.

- Park in Staunton walk
- Meet near the meet arrow
- Please have a harness and collar on
- Dogs must be leashed
- Message when you have arrived
- Be aware of off-leash dogs and snakes
- Other possible distractions: birds

powerpooches.com
Jake - 0412 285 928